



new 2017

Fx450

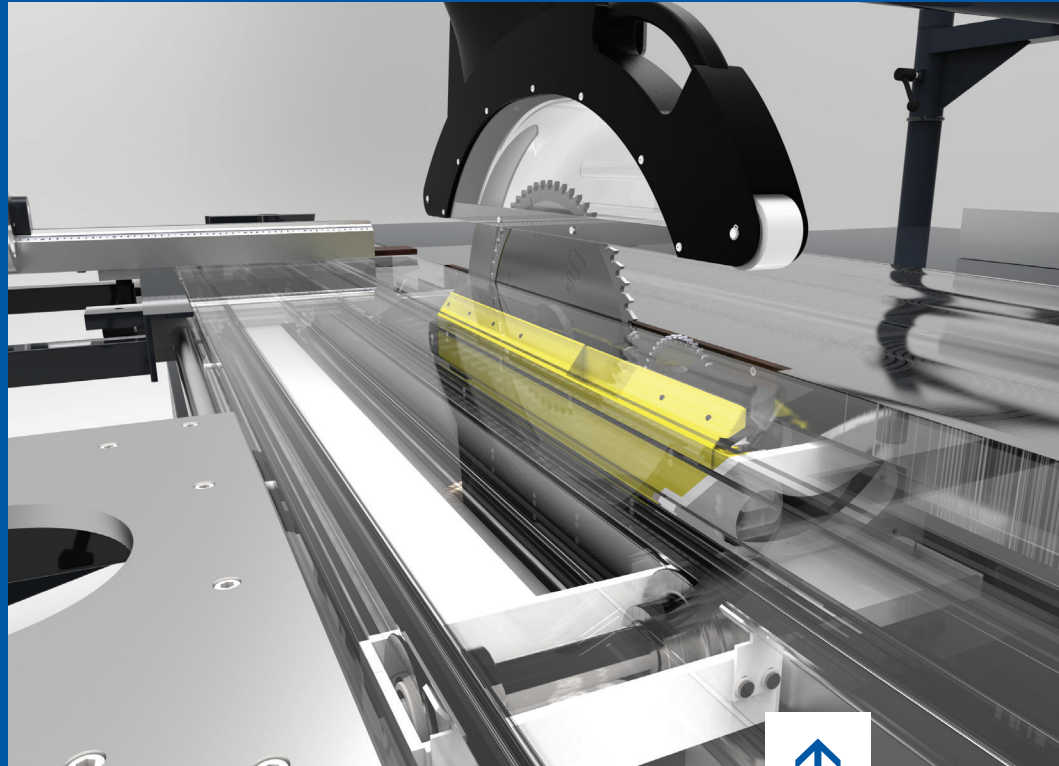
Fx450

Fx450 is a new sliding table panel saw made by REMA S.A. It sets the highest standards for sliding table panel saw. Fx450 is distinguished by strong structure and comprehensive cutting parameters.

The saw is equipped with a main cutting unit for circular saw blades with diameters from Ø 300 to Ø 450 mm, providing a maximum sawing height of 150 mm along with a scoring saw. The standard cutting width with the rip fence is 1400 mm.



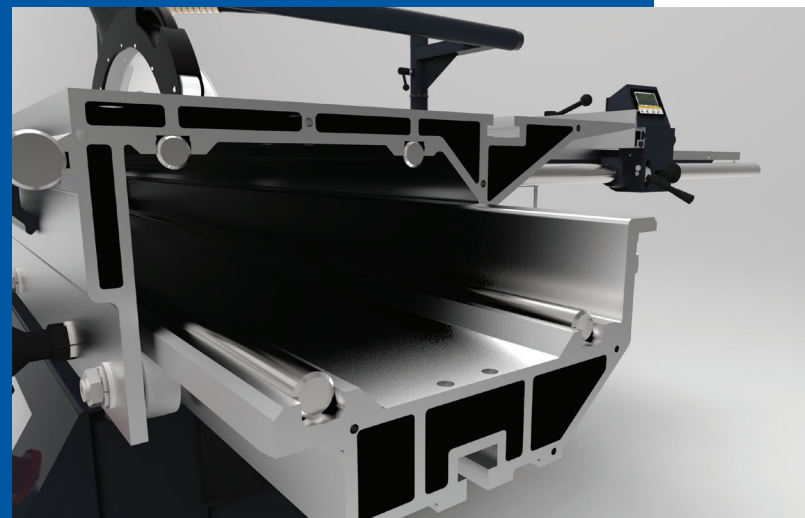
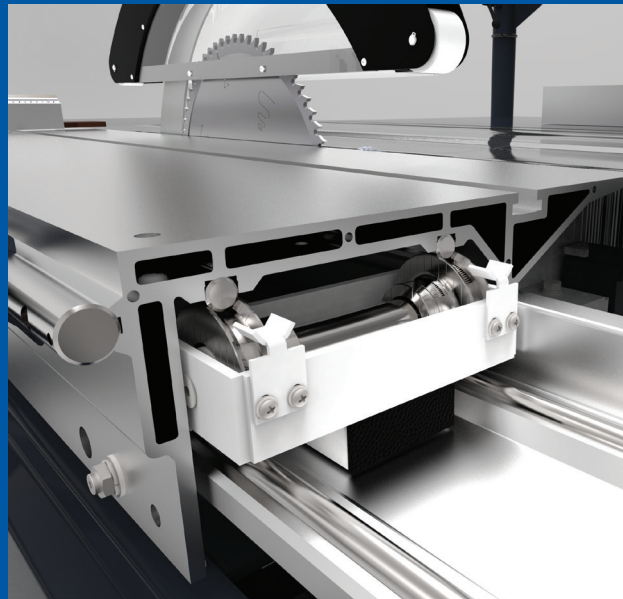
Fx450 Technical Solutions ↓



Sturdy guide of the sliding table on the 4 steel rods with a hardness of 60 HRC. Due to the increased diameter of the steel rollers, the sliding table runs smoothly.



Trolley of the anodize aluminum sliding table with automatic clearance compensation.



416 mm wide multi-chamber aluminium profile with 4 steel rollers and 12 eccentric rollers.



Thanks to the used mechanisms, the top guard adapts to the height of the workpiece to ensure safe operation. The guard is attached to a pipe, which has also a sawdust discharge function.

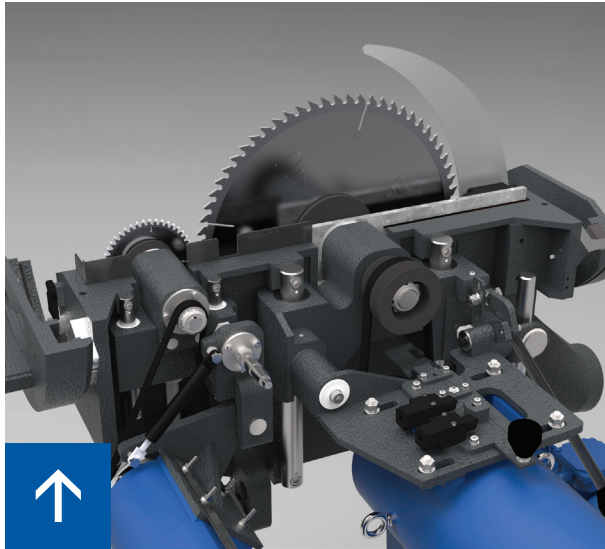


Electronic reader of the crosscut fence stopper with absolute memory function and 0.1 mm accuracy (optional).

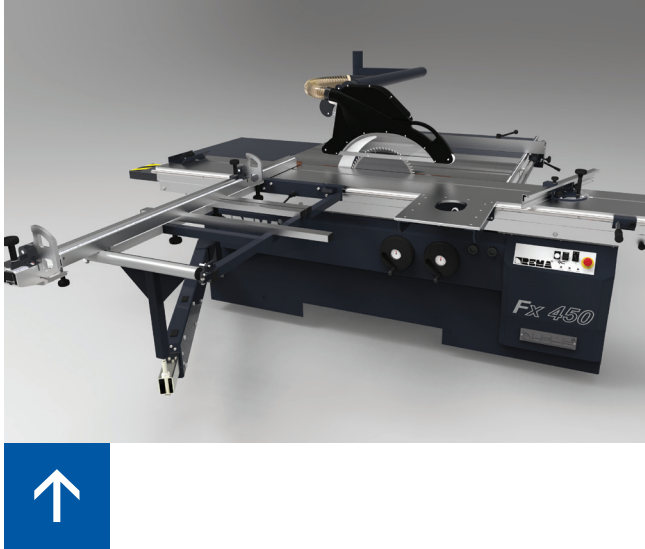


Continuous electronic readout of the saw angle – standard for the version with geared motors. Electronic readout of the saw height – option for the geared motors version.

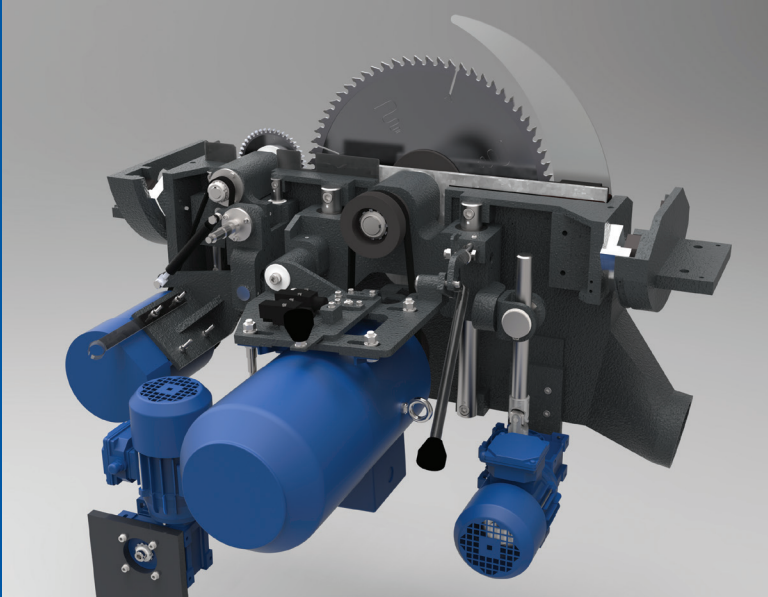
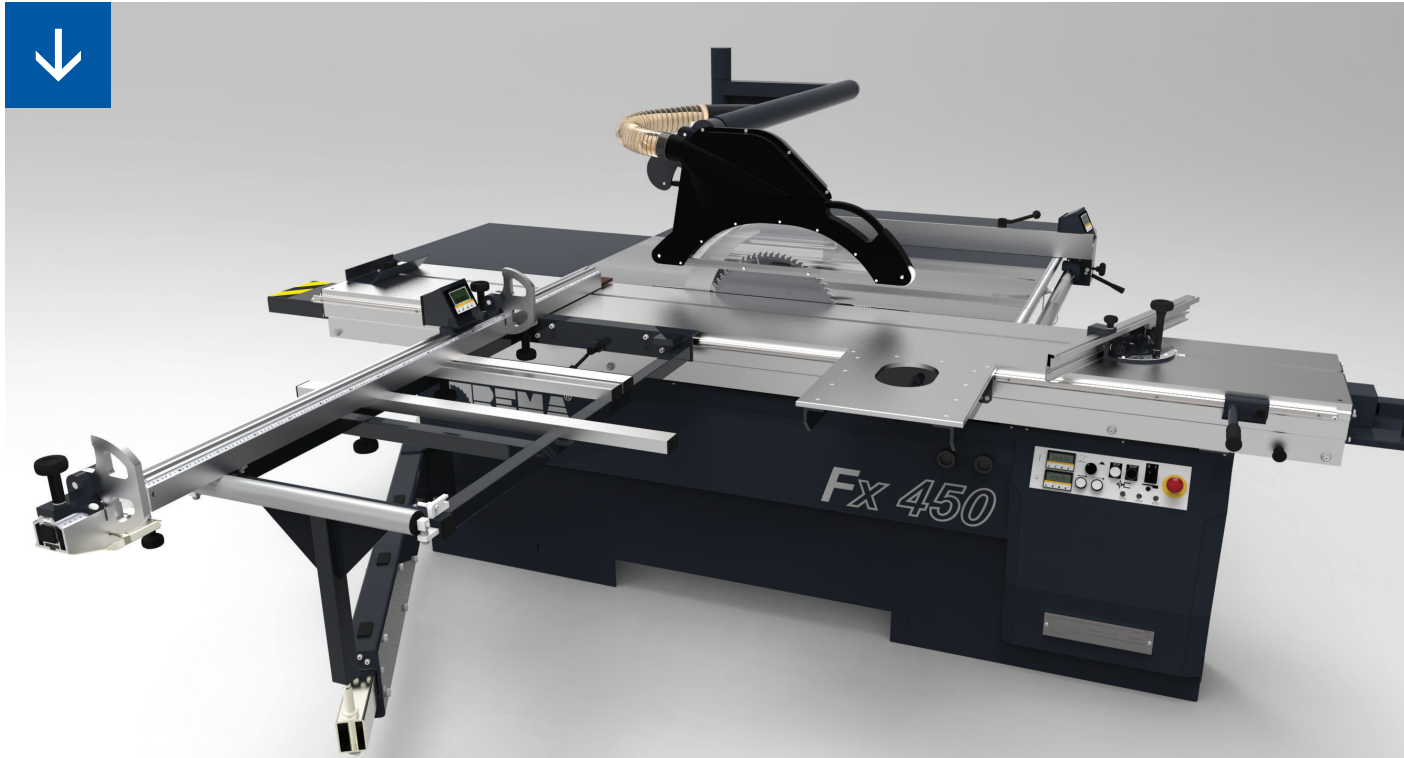




Cutting unit set on cast iron arches. A durable and functional solution with a 15 year warranty.



The Fx450 is also available in manual version.



Wireless start / stop switch located on the sliding table (optional).



Independent drives of scoring unit and main saw blade.



Electronic reader of the crosscut fence stopper with absolute memory function and 0.1 mm accuracy (optional).

Cutting parameters

Main saw blade diameter	Ø 300 – Ø 450 mm	
Sawing height depending on saw blade and angle	0°	45°
→ saw blade Ø 300	0–75 mm	0–50 mm
→ saw blade Ø 350	0–100 mm	0–70 mm
→ saw blade Ø 400	20–125 mm	12–85 mm
→ saw blade Ø 450	45–150 mm	30–105 mm
Saw blade tilting	0–45°, 0–46° (option)	

Cutting length with a crosscut fence

Sliding table 300	3000 mm
Sliding table 320	3200 mm
Sliding table 390	3700 mm

Cutting width with the crosscut fence

Stopper on the crosscut fence	50–1750 mm
Extension	1965–3200 mm
Stopper with electronic reader	50–1630 mm
Maximal distance of the rip fence	1400 mm

Drives parameters

Main motor power	6 kW / 7,5 kW – option
Scoring unit motor power	0,75 kW
Scoring unit saw diameter	Ø 120 – Ø 130 mm
Scoring unit rotation speed	8500 rpm
Main spindle tip diameter	Ø 30 mm
Scoring unit spindle diameter	Ø 20 mm
Main spindle rotation speeds	3500 / 4500 / 6000 rpm

* Machine specifications are subject to change. In case of doubt, the parameters indicated in the individual offer are binding.



REMA S.A.

ul. Bolesława Chrobrego 5
11-440 Reszel
tel. +48 89 755 01 19
sale@rema-sa.pl

rema-sa.pl